

Lynnhan

Company Profile

ShenZhen Sense Change Intelligence Technology Co., Ltd.

lynnhan.com

INTRODUCTION

Established in 2009, Lynnhan is a leading innovator in display technology, specializing in **LED, OLED, LCD, E-paper** digital signages, and interactive displays. We deliver cutting-edge visual solutions for diverse industries, combining superior quality, energy efficiency, and seamless interactivity, transforming communication and enhancing engagement in any space.

To drive global development, we offer **OEM/ODM** services to worldwide partners, delivering innovative, high-quality solutions tailored to meet diverse market needs.

Our mission

To transform spaces with dynamic, sustainable, and user-friendly display systems that inspire engagement and elevate experiences.

Our Vision

Pioneering the future of visual technology for a smarter, more connected



30000+

square meters
production line

300+

Patents

300+

Research&Development
Professionals

100+

Countries and
regions exported



COMPANY PROFILE

Our Value

01 **Respect**

We respect every team member. At the heart of Our brand Lynnhan’s operations is a profound respect for our clients and their ambitions. We listen, we understand, and we act with the intent to empower, creating technologies that resonate with and amplify your potential.

03 **Excellence**

Lynnhan is synonymous with the pinnacle of technological sophistication. We are dedicated to crafting experiences that embody the finest in functionality and form. Our relentless pursuit of perfection ensures that each innovation not only meets but redefines industry standards.

02 **Integrity**

Lynnhan upholds the highest standards of integrity, ensuring clients receive honest, transparent, and reliable services. Our commitment to professionalism and ethical practices builds trust, fostering long-term relationships.

04 **Customer-Oriented Service**

Service at Lynnhan is not a department; it’s an attitude. We believe in creating enduring relationships with our clients, anticipating their needs, and providing them with support that is as seamless and dependable as our technology. Every interaction is an opportunity to affirm our dedication to your success.

Production Lines



COMPANY PROFILE

Certificates

Our products meet CCC, ISO 9001, ISO 14001 standards, and passed RoHS、CCC、CE、FCC、ETL, UL, etc certificates



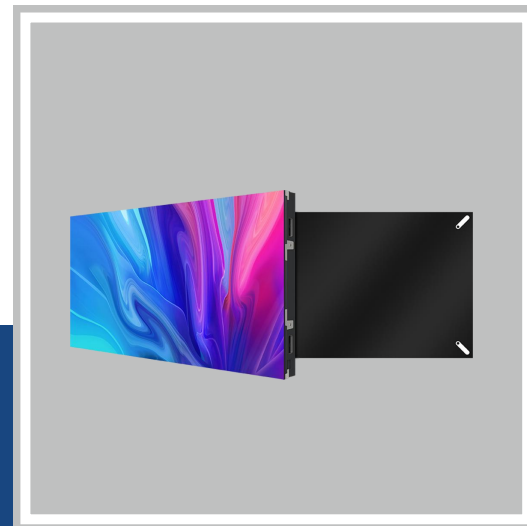
Quality

Efficiency

Customer

Innovation

KEY PRODUCTS & Customization SERVICES



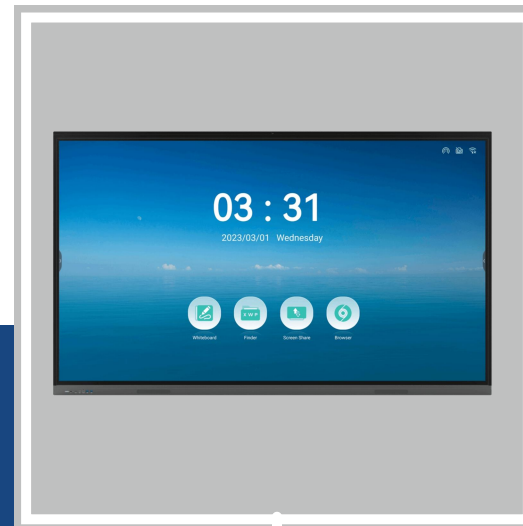
LED Displays

All In one LED, LED Poster, Shelf LED Display, LED Video Wall, etc



OLED Displays

OLED transparent screens



Smart boards

Smart Interactive Displays



LCD Digital Signages

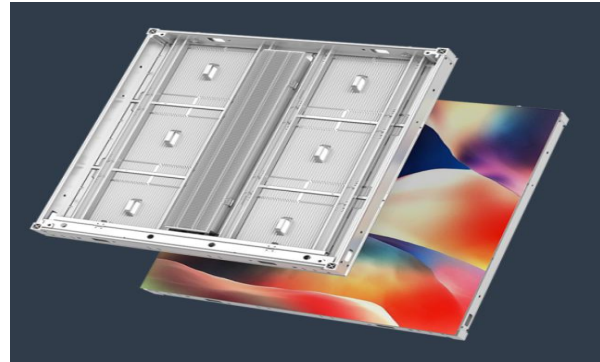
Indoor /outdoor LCD digital sigages /kiosks



E-Paper Digital Signages

E-Paper digital frames, digital signages

LED Display



PT Outdoor 3D BillBoard

- **Easy Maintenance:** Quick front-and-back access, ideal for diverse applications.
- **Superior Cooling:** Advanced thermal design for extended lifespan.
- **Flexible Splicing:** Supports right-angle and curved screen integration.
- **High Fire Safety:** Meets 5VB fire resistance standard.
- **Bright & Compliant:** 10,000 nits brightness, EMC CLASS B certified.
- **Energy-Saving:** Low power consumption at 150W per m².
- **Extreme Durability:** Works in -40°C to 60°C, perfect for harsh climates like the Alps or Dubai.



FC Outdoor 3D BillBoard

- **Ultra-High Brightness:** Ensures clear visibility even in bright environments.
- **Corrosion Resistance:** Built to withstand harsh conditions for long-lasting durability.
- **Salt Mist Resistance:** Ideal for coastal or industrial environments.
- **IP66 Rated:** Fully moisture-proof and waterproof for reliable performance in all weather.
- **V0 Fireproof:** Meets the highest flame-retardant standards for safety.
- **Superior Display Quality:** Delivers sharp, vibrant visuals for an exceptional viewing experience.
- **Energy Efficiency:** Low average power consumption of 186 W/m², reducing operational costs.



AH Outdoor 3D BillBoard

- **Custom 3D Displays:** Tailored right-angle or curved designs to fit any building.
- **Seamless Stitching:** Perfect flatness with fine-tunable modules.
- **Ultra-Wide Viewing:** Immersive experience with wide horizontal/vertical angles.
- **HD & Vibrant:** Ultra-high contrast for vivid, lifelike visuals.
- **IP65 Rated:** Fully waterproof, built for harsh weather.

LED Display



FA SERIES

Outdoor Common Cathode
Energy Saving

- **Pixel Pitch: 3.81mm /5.33mm /6.67mm /8mm /10mm**
- **Unmatched Durability:** Aluminum Module Design, Weatherproof Construction, excellent **moisture resistance and salt spray resistance**
- **Crystal-Clear Visibility:** High Brightness, 3840 Hz High Refresh Rate
- **Energy-Efficient & Eco-Friendly:** Common Cathode Technology, Fanless Design
- **Safety & Reliability:** Fireproof Materials, IP65 Rating
- **Easy Maintenance & Customization:** Front and Rear Maintenance, Customized Solutions
- **IP 65**



FC SERIES

Outdoor Common Cathode
Energy Saving

- **P3.33/4.44/5.7/6.67/8/10**
- **Superior Heat Dissipation & Durability IP66 rating** Corrosion & Salt Spray Resistance; Moisture-Proof & Waterproof:
- **Energy Efficiency** Fanless Design
- Energy Saving over 30%
- **High-Performance Display** High Brightness, High Refresh Rate
- **Easy Installation & Maintenance** Wall-Mounted Design, Front & back service
- **Customizable Solutions** 90° Right-Angle & Curved Joints
- **Built for Extreme Conditions** Wide Temperature Range -40°C to 80°C Fireproof & Flame-Retardant



FS SERIES

Outdoor Common Cathode
Energy Saving

- **P1.56/P1.95/P2.064/P2.97/P3.91**
- **High Definition & High Brightness**
- **All-Aluminum Cabinet Structure** Durable & Reliable:harsh weather conditions.rain, snow, dust, and extreme temperatures.
- **Easy Installation & Maintenance**
- **Versatile Applications** Outdoor Billboards, Commercial Plazas,Bus Stops
- **Energy savings over 40%**
- **IP66**



FX SERIES

Outdoor Common Cathode
Energy Saving

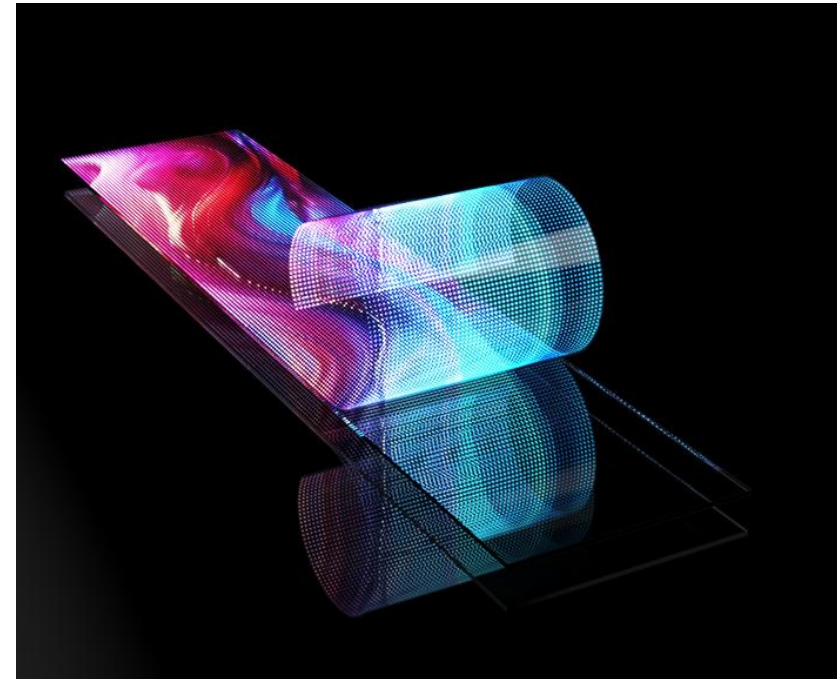
- **Pixel Pitch: 2mm /2.5mm /3mm /4mm /5mm /10mm**
- **Common Cathode Energy Saving over 40%**
- **45° Beveled Module (Optional)** Easily Achieve Curved Display
- **Standardized Modules Consistent Module Mounting**
- **Holes, Interchangeable with Different Modules**
- **Rear Maintenance**
- **Fast Heat Dissipation**
- **IP65**

LED Display



All In One LED

- **Pitches P0.93/P1.56/P1.95/P2.6**
- **COB Dynamic Virtual Pixel Technology -Double Physical Pixel**
- **Super vivid viewing**
- **Energy Efficiency**
- **Eye Care Innovation**
- **Touch screen, customized size**
- **Smart Connection**



LED Chip Screen

- **Pitches P3.75/P4/P5/P6/P7.5**
- **95% Ultra-High Transparency**
- **Feather-Light Design: $\leq 0.3\text{kg}$ per module**
- **Energy Efficiency**
- **Ultra-Thin Construction: $< 0.8\text{mm}$ thickness**
- **Energy Efficiency: $50\text{--}80\text{W/m}^2$, saving up to 70% energy.**
- **140° Wide Viewing Angle**
- **Seamless Transparency: Invisible from 5–10 meters**



LED Holo Display

- **Pitches P2.5/P3.91/P6.25**
- **Frameless Mounting**
- **Over 80% High Transparency**
- **Ultra-Thin Design under 2mm thick**
- **Customizable Size**
- **Self-Developed IC**
- **140° Wide Viewing Angle**
- **Premium Materials**

LED Display



Shelf LED Display

- **Pitches P1.5/P1.875/P2/P2.5**
- **Seamless splicing**
- **Ultra high resolution**
- **Super Slim in Depth and Light in Weight**
- **Multiple Installation Modes**
- **Multiple Linkage Modes**
- **Multiple Connection Ways**
- **Easy to Install and Move**



Ultra Thin & Ultra Light



Foldable and Front Maintenance

LED Poster

- **Pitches P1.25/P1.5/P1.8/P2/P2.5**
- **Intelligent Split Screen**
- **Cascading Splicing**
- **Multiple Playback Modes**
- **3840Hz Ultra-High Refresh Rate**
- **Synchronous & Asynchronous Mode**
- **Remote Wireless Interaction**
- **Multiple Installation Options**
Standing/Hanging/Wall Mounted



Foldable



LED Poster Kiosk

- **Highly customizable sizes.**
- **Controlled by mobile phone/iPad through 4G/wifi/USD/icloud.**
- **Automatic brightness adjustment.**
- **100% front service.**
- **Multiple installation method: Floor standing/ Hanging/Wall mounting.**
- **High brightness up to 8,000nit**

LED Display



R Pro LED Poster

- **Poster screen size: 640mm x 1920mm, Maximum height 2400mm;**
- **compatible pitch: 1.25mm / 1.53mm / 1.86mm**
- **320mm x 160mm module with no plastic housing, using hard connection**
- **technology and matched with 640mm x 480mm die-cast aluminum cabinet;**
- **Movable LED screen: standard with movable casters with brake function;**
- **Supports synchronous, asynchronous, and remote control.**



Foldable LED Poster

- **Size: 960x1920 mm**
- **Intelligent Split Screen**
- **Cascading Splicing**
- **Multiple Playback Modes**
- **3840Hz Ultra-High Refresh Rate**
- **Synchronous & Asynchronous Mode**
- **Remote Wireless Interaction**
- **Front Maintenance**



Double Sided Ultra Slim LED Poster

- **Dual-Sided Display: Different content on each side.**
- **Ultra-Slim: Only 26mm thick.**
- **Lightweight: Just 5.6kg.**
- **Seamless Splicing: Flawless 500mm x 500mm assembly.**
- **Die-Casting Aluminum Cabinet: Durable & seamless.**
- **Cable-Free Design: Enhanced stability, low maintenance.**
- **High Brightness: Vivid visuals in bright light.**
- **Wide Viewing Angle: Clear from all angles.**
- **Energy-Efficient: Common cathode technology.**
- **Customizable: Tailored to your needs.**



Outdoor E1.98-PRO COB

- **10000:1 contrast ratio, 1.98mm Fine-pitch and high definition outdoor LED screen**
- **Outdoor 500x500mm cabinet size, compatible pitch: 1.98mm**
- **Upgraded High-Protection COB technology, waterproof, dust-proof, anti-oxidation, anti-static, anti-impact**
- **Support front/ rear installation, front/ rear maintenance**
- **IP65 high protection both module face and cabinet, supporting use in outdoor weather**
- **One cabinet for various applications, supporting concave and staggered splicing.**
- **Outdoor rental event and permanent installation freely**

LED Display



Helix Double Sided Ultra slim LED display

- **High Pixel Density P1.5 mm /2.6 mm**
 - **One-Piece Die-Casting Aluminum Process**
 - **Seamless Splicing**
 - **Ultra-Slim & Lightweight** 26mm thick double sided, 23 mm thick singled sided
 - **Rigid Connection Method**
 - **Easy to Install & Maintain**
 - **Durable & Reliable:** Built to last with precision engineering and high-quality materials.
- Applications:** Airport, Sport venues, Tourist Attractions, Exhibition halls



Indoor SK Series

- **Pixel Pitch: 1.56mm /1.95mm /2.6mm / 2.97mm/ 3.91mm**
- **Ultra Lightweight, Ultra Slim** 1000x250mm cabinet 4.8kg, 20 mm thick
- **Compact appearance**
- **Various Creative Shapes** flat, curve, column screen
- **Multi-Cabinet sizes** 1000x250/750*250/500*250mm
- **Flexible structural design for installation:** Multiple installations: Wall-mounted, Hoisting, Double-sided lifting, Shelf screen installation.
- **Receiver Card Dual Backup**
- **Applications:** Shopping Malls And Hotels, Airport Station, Exhibition Halls & Conferences



R Series / Rental (Indoor/Outdoor)

- **Pixel Pitch: 1.95mm /2.6mm / 2.97mm/ 3.91mm**
- **Equal current backup, never black screen**
- **Lightweight Die-Cast Aluminum 7.5kg**
- **Corner protector**
- **Modular Maintenance**
- **Curved Design**
- **>3840Hz refresh rate**
- **Applications:** Live show, music festival, film shooting, exhibitions

LED Display



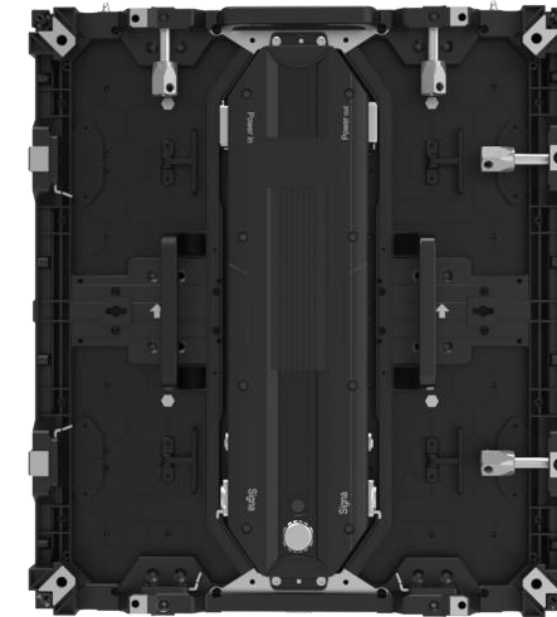
COB Fine Pitch LED

- **COB Technology**
- **Fine Pitch Pixel P0.7,P0.9, P1.2,P1.5, P1.8**
- **High Brightness**
- **Superior Contrast**
- **Wide Viewing Angle**
- **Energy-Efficient**
- **Durable Design**
- **Slim Profile**
- **Easy Maintenance**



Rental / Stage LED

- **High-Resolution Display**
- **Seamless Splicing**
- **Wide Viewing Angle**
- **High Brightness**
- **Slim & Lightweight**
- **High Durability**
- **Energy-Efficient**
- **Flexible Installation**



Outdoor Fine Pitch LED

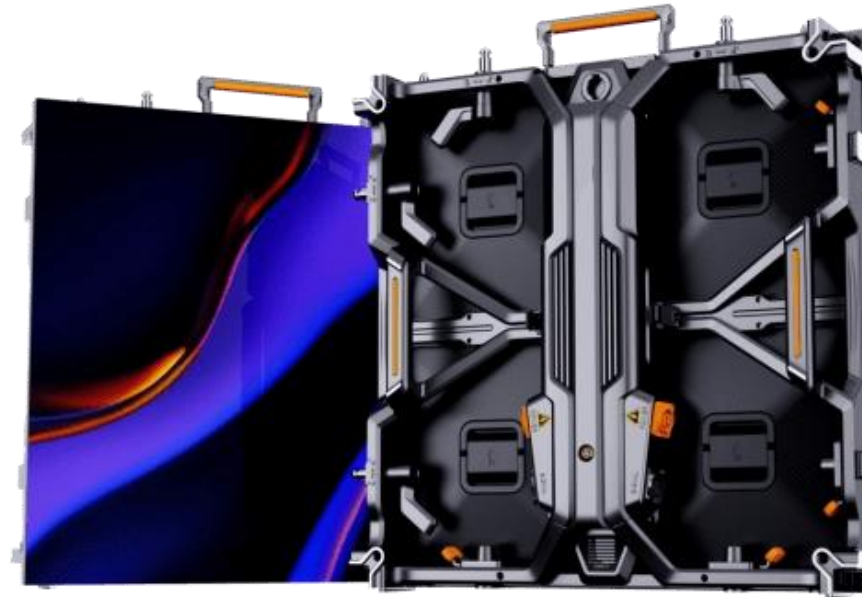
- **High Pixel Density P1.2 P1.5 P1.8, P2.5**
- **Versatile Installation**
- **Golden Ratio (8:9 Cabinet)**
- **100% Front & Rear Maintenance**
- **Sleek Angle Design**
- **High Contrast & Refresh Rate**
- **Robust 9-Layer Protection (eye-safe, waterproof, crash-proof, humidity-proof, dustproof, shockproof, seawater-proof, static-proof, and UV-proof)**
- **Flexible Mounting Options**
- **Outdoor Integrated TV**

LED Display



Indoor Fine Pitch LED

- **Fine Pitches P0.9, P1.2, P1.5, P1.875, and more.**
- **High Definition & High Refresh Rate**
- **Precise Color Calibration**
- **Moiré Pattern Elimination**
- **Ultra HD 2K/4K**
- **All-Front Maintenance Design**
- **Ultra-Thin & Lightweight**
- **Wireless Connection**
- **Wide Color Gamut**
- **90° Right Angle Splicing**
- **Quick Installation**



**Film XR Studio
Virtual Production LED**

- **Modular Design**
- **HDR Support**
- **High Pixel Density**
- **Flexible Installation**
- **Durable & Safe**
- **Wide Applications**
- **Advanced Specs: 7680Hz refresh rate, 160° viewing angles, and environmental resilience.**



Flexible Creative LED

- **Ultra-high-definition**
- **High reliability**
- **Flexibility**
- **Durability**
- **Safety**
- **Low energy consumption**
- **Eco-friendly**

OLED Display



30 Inch Desktop Screen



30 Inch Query Station Screen



**55 Inch Guest Welcome Screen
T009**



**55 Inch Guest Welcome
Screen T023**



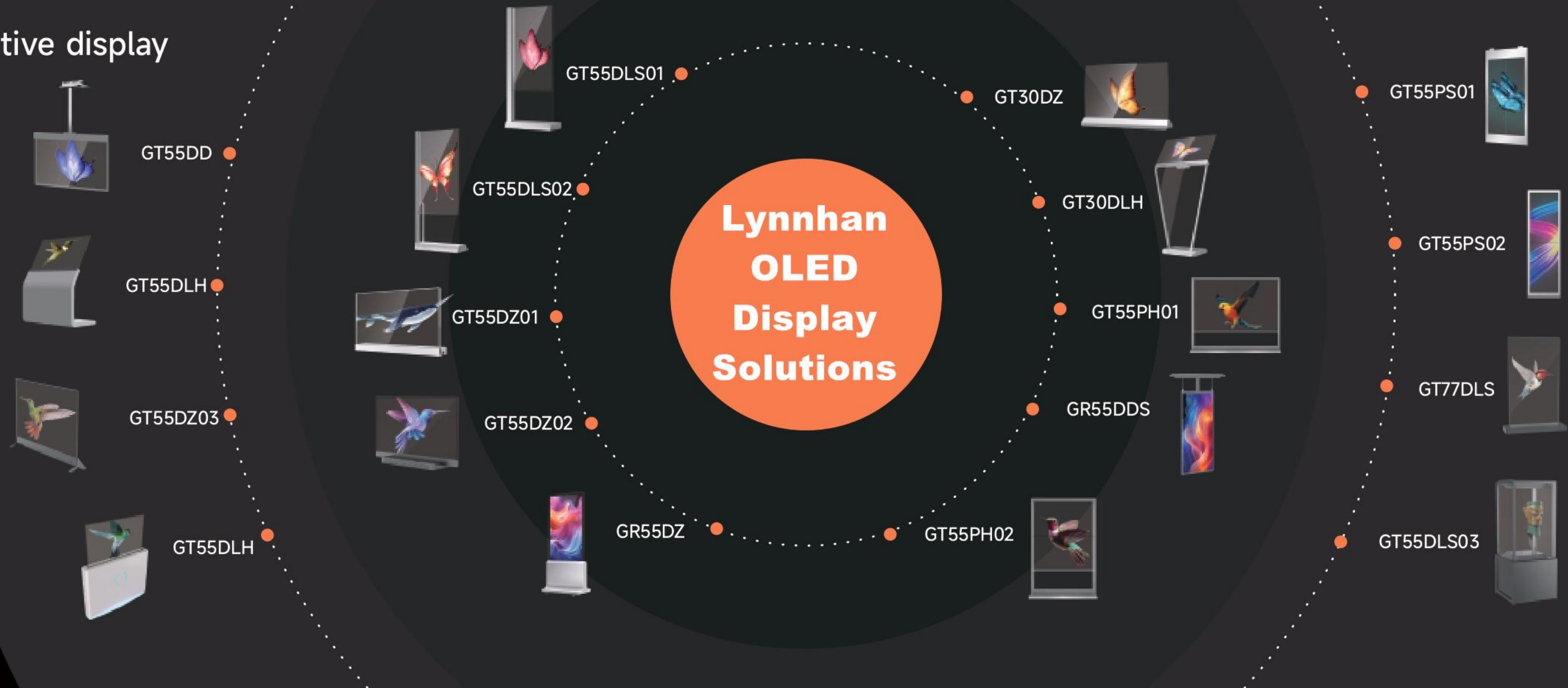
**55 Inch Horizontal Floor
Standing Screen**



**55 Inch Rollable Digital
Robot**

OLED Display

Lynnhan Creative display



Smart Board



KS Interactive Panel
55"/65"/75"/86"/98"/110"

- **Google EDLA Certified**
- **Android 14.0**
- **8+128G**
- **Zero Bonding Technology**
- **4K Ultra HD Display**
- **Responsive Touch Technology**
- **Robust Screen Protection**
- **Smart Connectivity Options**
- **Advanced Audio Experience**
- **Interactive Display Functionality**
- **Integrated Camera and Microphones**
- **User-Friendly Interface and Multilingual Support**
- **Energy-Efficient and Eco-Friendly Design**



**Smart Boards HE V6 Series/
Customization 75"/86"/98"/110"**

- **Diverse Conferencing Scenarios**
- **High-Performance CPU & Bluetooth 5.0**
- **48 Million Pixel Camera**
- **Friendly Eye Care**
- **Double-Sided Anti-Glare Tempered Glass**
- **>= 85% NTSC**
- **4K UHD Display**
- **Instant Multi-Format File Playback & NFC One Touch Screen Casting**
- **Wireless Screen Casting Mirroring**
- **Free Writing & Two-Point Touch Efficient Meeting**
- **10 Meter Pickup**
- **High Precision Touch Control**
- **WiFi-6 & 4K High Definition**
- **Voice-Controlled**



Smart BlackBoard HE F3 Series
98"/86"

- **Real 4K Resolution Display**
- **Built-in Intelligent CPU and Operating System**
- **Optional OPS PC Module**
- **Advanced Touch Screen Technology**
- **Anti-Light Interference**
- **High-Precision Touch**
- **Integrated 3-in-1 Technology**
- **HD Image GPU Engine**
- **Intelligent Display Chips with Android System**
- **Writable and Annotatable Interface**
- **HDMI 4K 60Hz Support**
- **Smart System Memory**
- **Integrated Camera and Microphone Array**
- **Android 11 with 4K UI and 4K Whiteboard**
- **Versatile Connectivity Options**
- **Smart Light Sensor**

LCD Digital Signage Kiosk Indoor



**Rollable Smart Touch
Screen 23.8" / 27" / 32"**

- **Versatile Display Options:** 23.8", 27", 32" sizes; 1080p HD/4K; NTSC 95% color gamut; anti-glare coating; 10-point capacitive touch
- **Advanced Eye Protection**
- **Intelligent Voice Assistant**
- **Energy-Efficient Technology**
- **Multi-Screen Interaction**
- **Portability and Flexibility**



**32-85 inch Ultra Thin
Wall-Mounted Advertising
Display**

- **High definition display**
- **Remote Publishing**
- **Smart Split-Screen**
- **178° Wide Viewing Angle**
- **Customizable Functions**
- **Built-in WiFi**
- **Loop Playback**
- **Standing / Hanging / Wall Mounted**



**HD Ultra-Thin Vertical
Advertising Display**

- **Plug-and-Play Advertising**
- **178° Full Viewing Angle**
- **10-Point Multi-Touch**
- **Automatic Loop Playback**
- **Smart Split-Screen**
- **Remote Control via Smart Devices**
- **Durable and Lightweight Design**



**43-65 Inch Rotatable Floor
Standing Advertising Digital
Signage**

- **360° Rotatable Screen**
- **1080P HD Playback**
- **Capacitive / Infrared Touch screen**
- **Intelligent Split-Screen Display**
- **Multiple Connectivity Options**
- **24/7 Full-Day Playback**
- **Optional OS Configuration**

LCD Digital Signage Kiosk Outdoor



Ultra-thin Wall-mounted Outdoor LCD Screen

- 3000 nits high brightness
- Ultra-thin bezel design
- Wide 178° viewing angle
- Cloud-based smart software
- Loop playback, smart split-screen, remote management
- Ten-point touch capability
- Built-in WiFi
- Multiple mounting options: horizontal, vertical, floor-mounted, hanging
- Custom installation available upon request



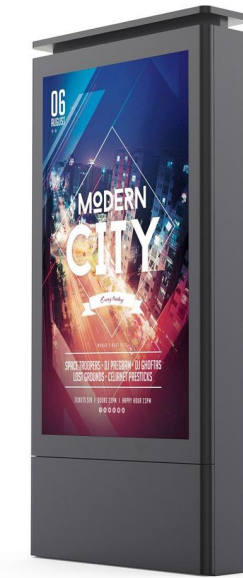
32-98 inch Wall-Mounted LCD Advertising Display

- IP65 Waterproof & Dustproof, Lightning Protection
- Sunlight Readable
- High Brightness (2000-3000 nits)
- Timing Switch
- Cloud Control
- Patented Heat Dissipation
- 178° Wide Viewing Angle
- Intelligent Split Screen Playback
- High-Grade Material & Excellent Workmanship
- Intelligent Temperature Control



Outdoor LCD Advertising Digital Signage Kiosk

- IP 65 waterproof and dustproof all weather
- Galvanized steel + anti-corrosion (10+ years)
- AG glass (97% light transmittance, explosion-proof)
- Built-in air conditioner (smart temp control, heating)
- Auto brightness adjustment (2000 nits max)
- Electrical protection (leakage & lightning)
- Industrial power board (power-saving)
- 10-point capacitive touch (responsive touch)



32-98 Inch Double Side Advertising Digital Signage

- 2000-3500 nits brightness (sun-readable)
- IP65-rated (waterproof, dustproof, anti-corrosion)
- Operates in -40°C to +50°C with temperature monitoring
- Full HD 1080P playback, Multi-screen synchronization & 24/7 operation
- Cloud control and remote management.
- Built-in air cooling and heating systems.
- Low energy consumption (eco-friendly design)
- Plug & play setup with pre-loaded content
- Anti-reflective glass and anti-theft lock.
- Optional Supports 4G/5G, WiFi, Bluetooth, GPS, touchscreen, motion sensor, camera, printer, scanner

LCD Digital Signage Kiosk Outdoor / Customization



**Ultra-thin Double Sided
LCD Display Menu Board**



**Ultra Thin Outdoor LCD
Advertising Display Kiosk**



**Outdoor LCD Advertising
Display Totem**



**43-75 Inch Waterproof
Adversiting Digital Signage**



**Outdoor Interactive LCD
Digital Signage**



**Outdoor LCD Advertising
Display Kiosk**



**Outdoor Drive thru Menu
Boards**



**Outdoor LCD Advertising
Signage With Charing Pile**

E-paper Digital Signage / Digital Frame

- **Ultra-Low Power Consumption: Eco-friendly, energy-saving**
- **Green Technology: Sustainable, reduces environmental impact**
- **Outdoor Durability: Weather-resistant, long-lasting**
- **Indoor Wall-Mounted: Ultra-thin, low-power, sleek design**
- **Smart Features: Data-driven, real-time content, demographic targeting**
- **Versatile Applications: Smart cities, green offices, traffic signs, advertising**
- **Paperless Solutions: Replaces traditional paper-based signs (e.g., electronic nameplates)**



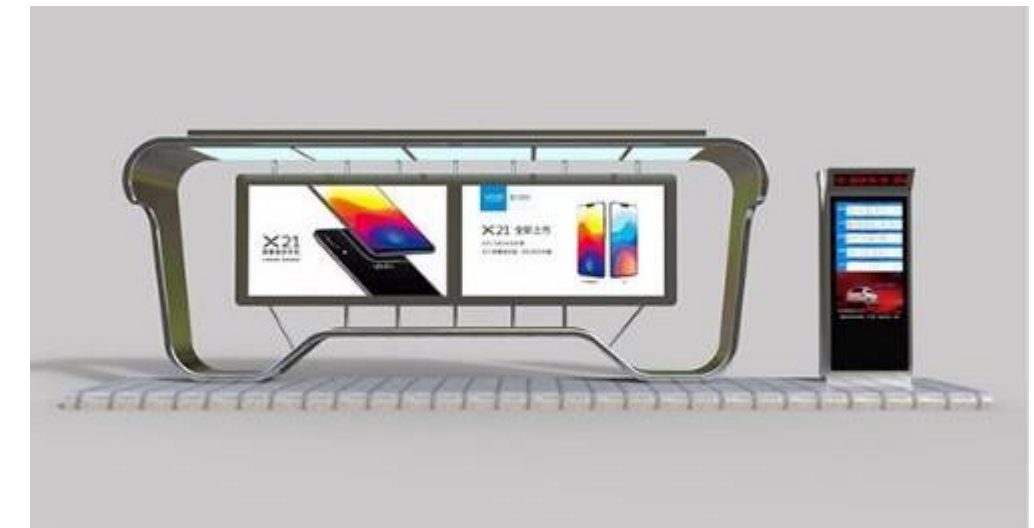
Full Color E-paper Advertising Signage



32 inch Full Color E-paper Kiosk

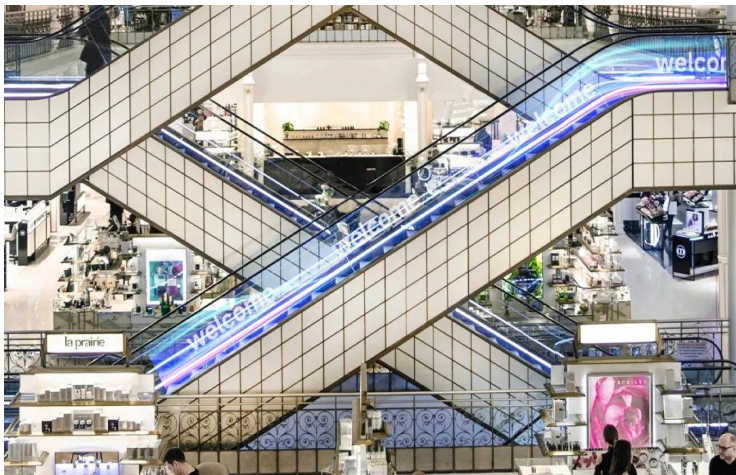


Full Color E-paper Wall Mounted Advertising Signage / Digital Frame

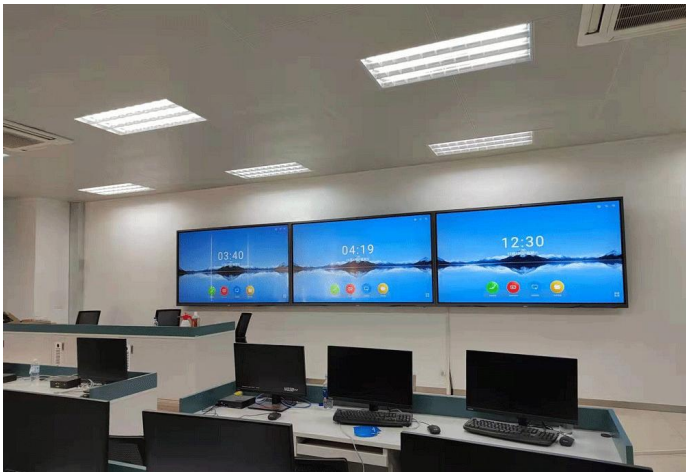
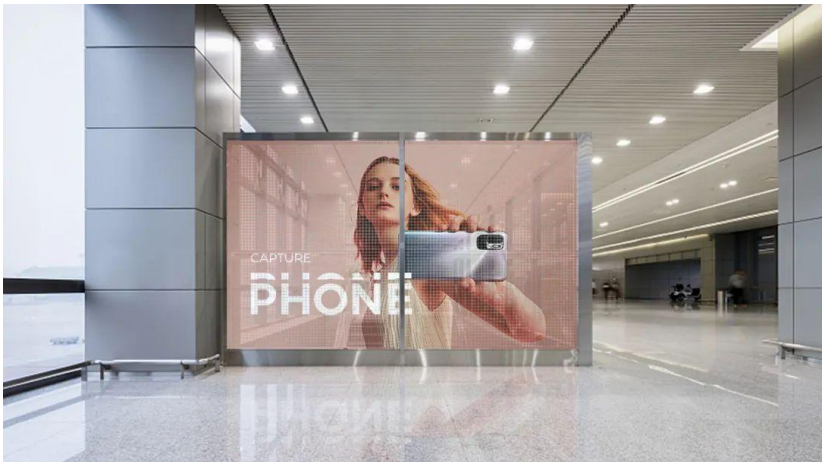


Full Color E-paper Smart City Bus Stop Digital Signage

ShowCases



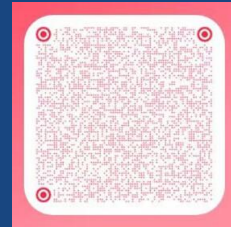
ShowCases



Lynnhan

lynnhan.com

ShenZhen Sense Change Intelligence Technology Co., Ltd.



Social Media



[smart-digital-signage-manufacturer/](https://www.linkedin.com/company/smart-digital-signage-manufacturer/)



[Lynnhan Leddisplay](https://www.facebook.com/LynnhanLeddisplay)



[lynnhan-smart-digital-signage](https://www.youtube.com/channel/UClynnhan-smart-digital-signage)



[@lynnhan_digitalsign](https://www.tiktok.com/@lynnhan_digitalsign)

Email

sales@lynnhan.com

Phone / Wechat / Whatsapp

+86 189 2843 1537

Address

Ruifeng Optoelectronics uilding, Ronghui Road,
Guangming District, Shenzhen City,
Guangdong Province, China, 518107